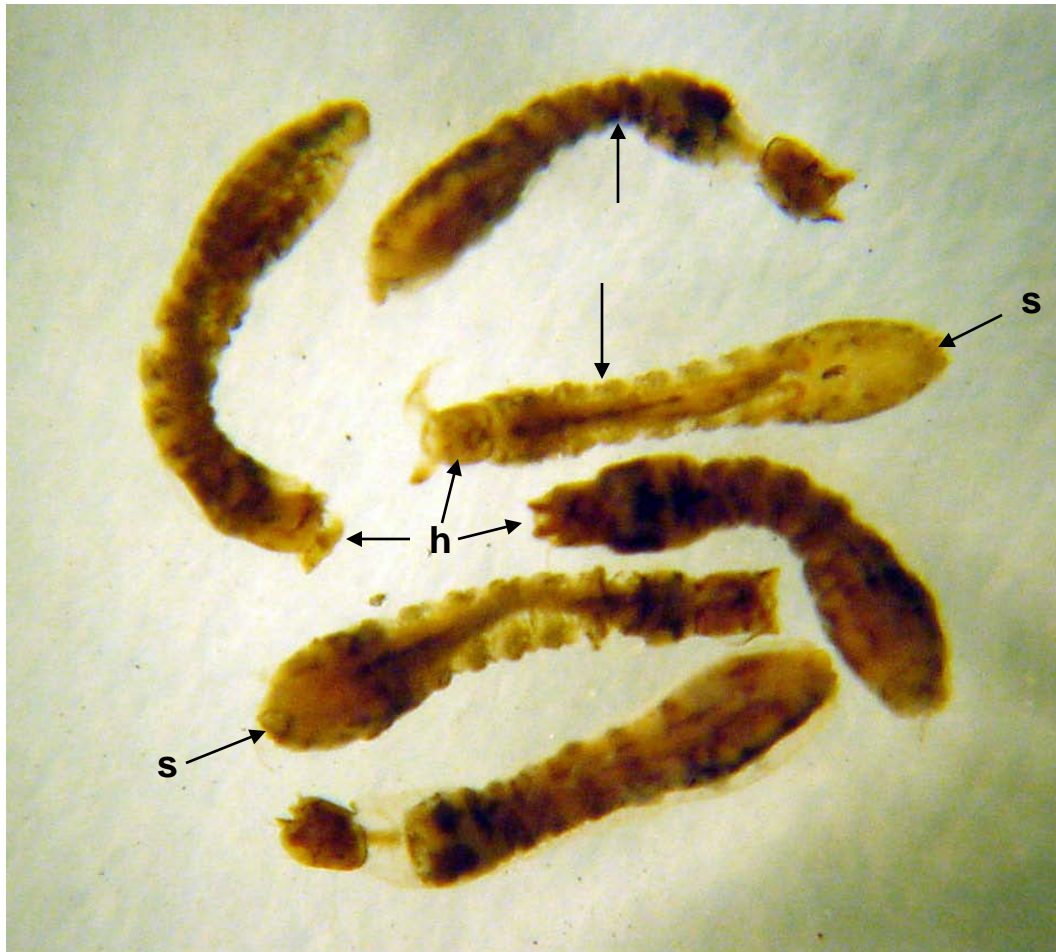
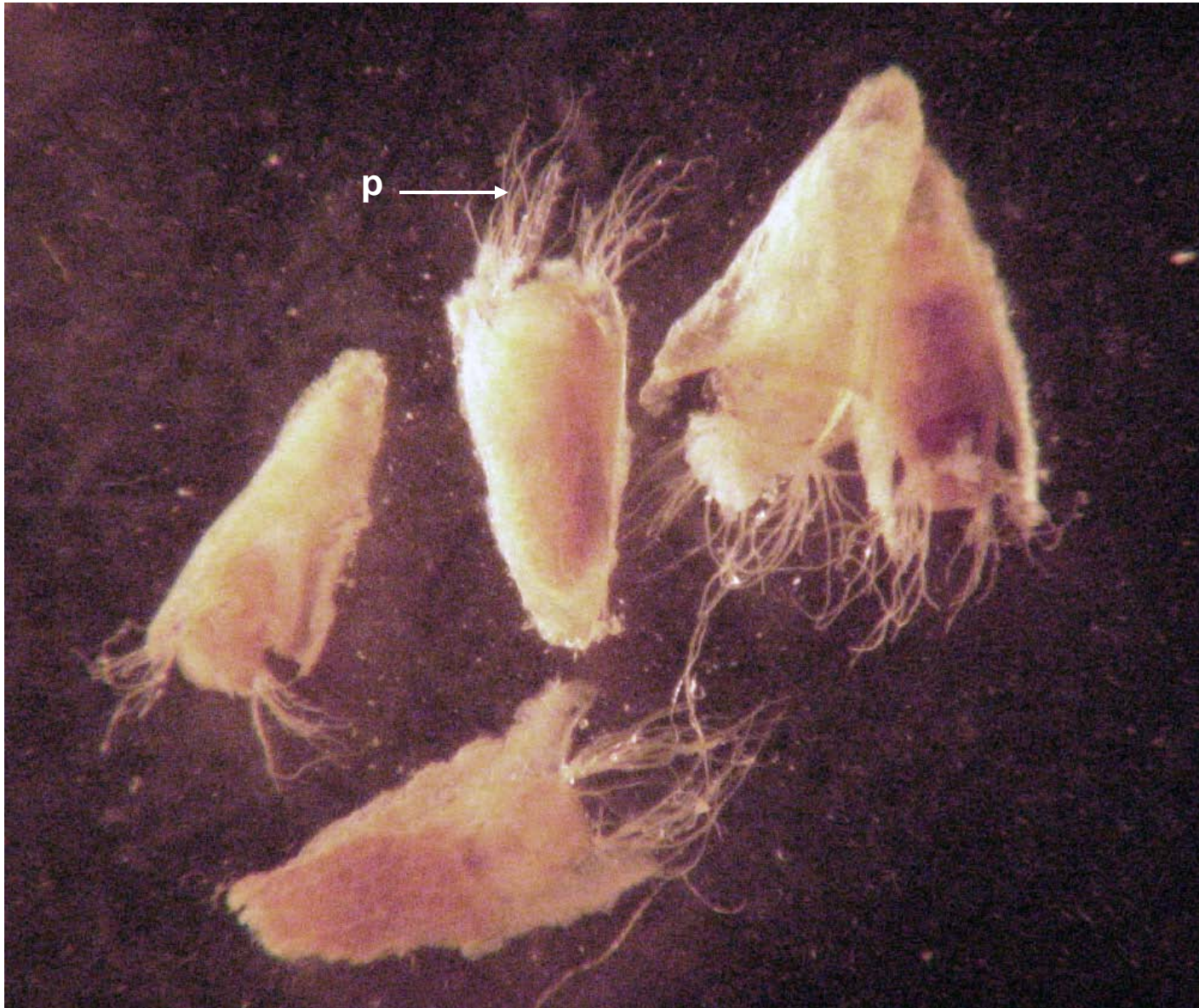


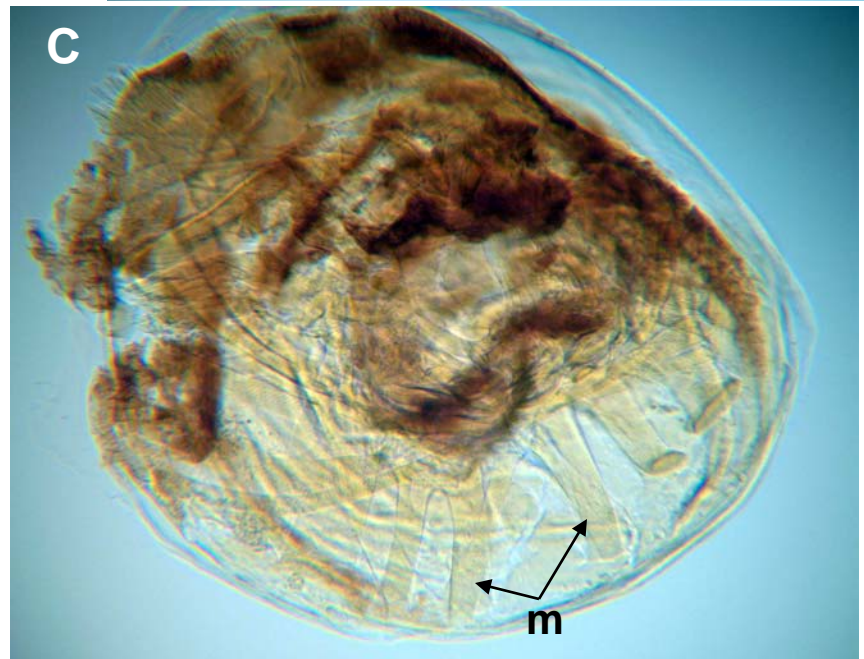
Simulium vittatum, larvae. Note “club-shaped” appearance with anterior abdominal segments (arrows) somewhat less than width of thorax.
Legend: h, head; s, posterior sucker. (Alcohol mount).



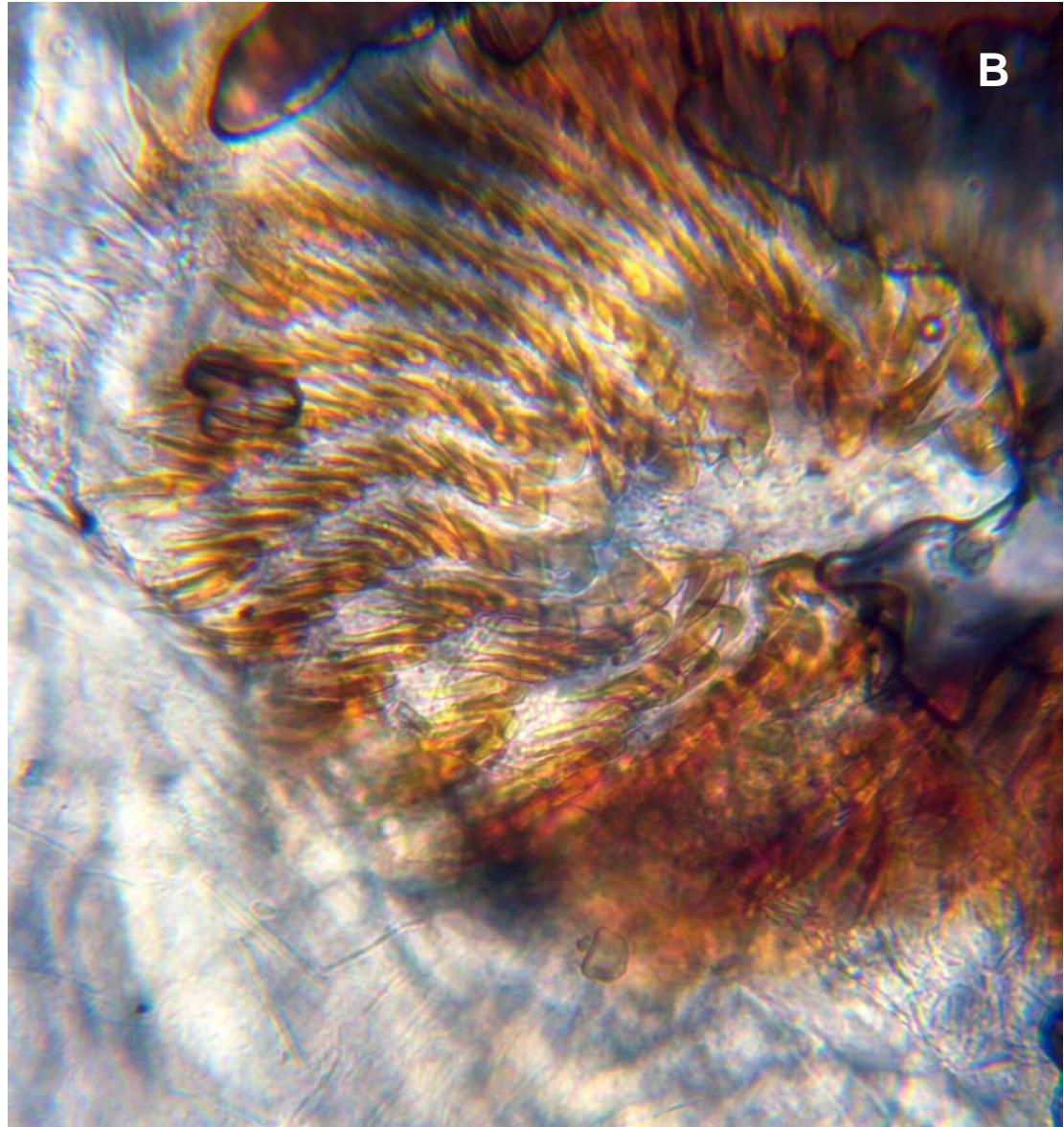
Simulium vittatum, pupae (in cocoons). Legend: p, pupal gills.



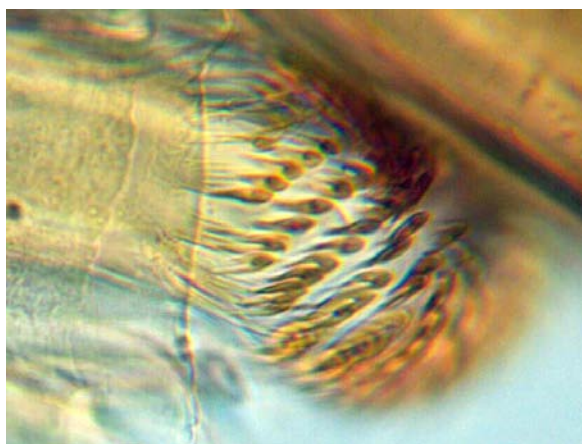
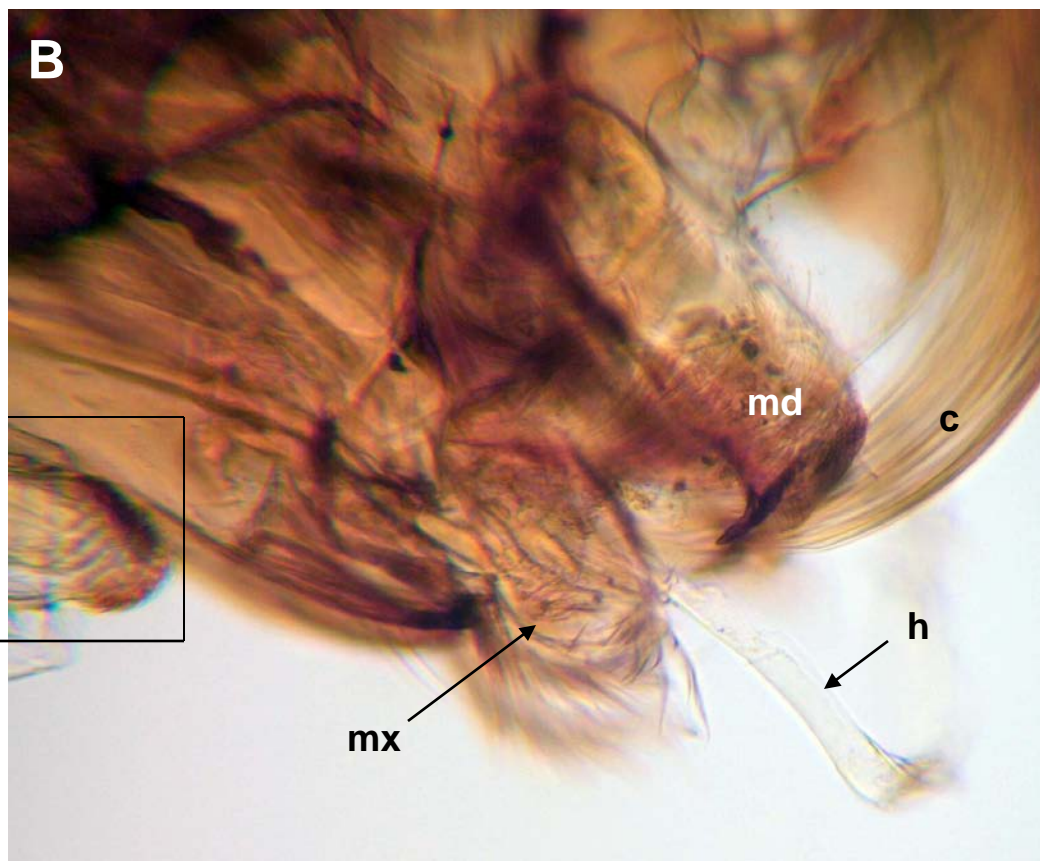
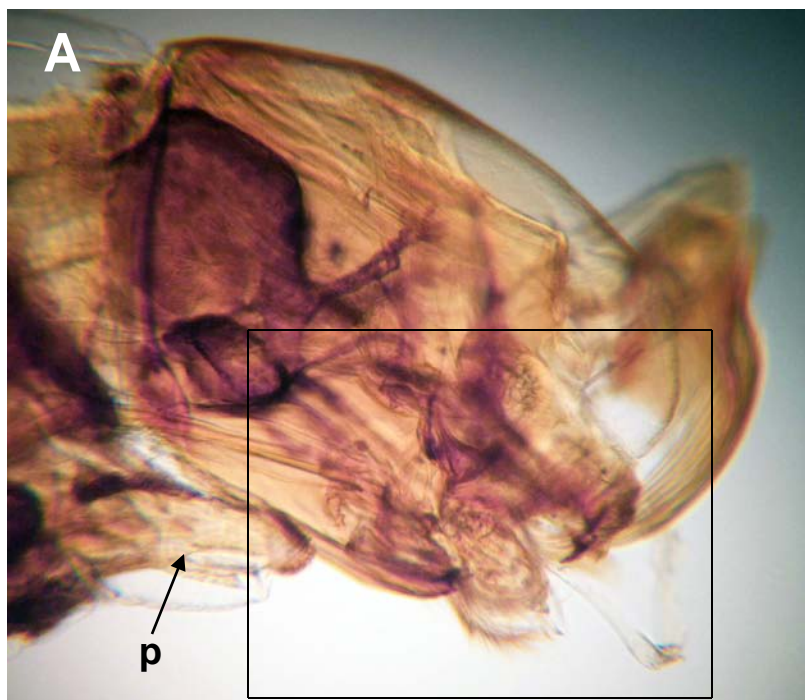
S. vittatum larva with posterior sucker. Box in A enlarged in B & C. Note rows (r) of sucker spines in B, and powerful muscles (m) controlling sucker in C.



S. vittatum, spined posterior sucker of larva (A), rows of spines enlarged in B.



S. vittatum larva, lateral view of head. Legend: c, cephalic fan (= mouth brushes); h, hypopharynx; p, proleg; md, mandible; mx, maxilla.
Box in A enlarged in B.

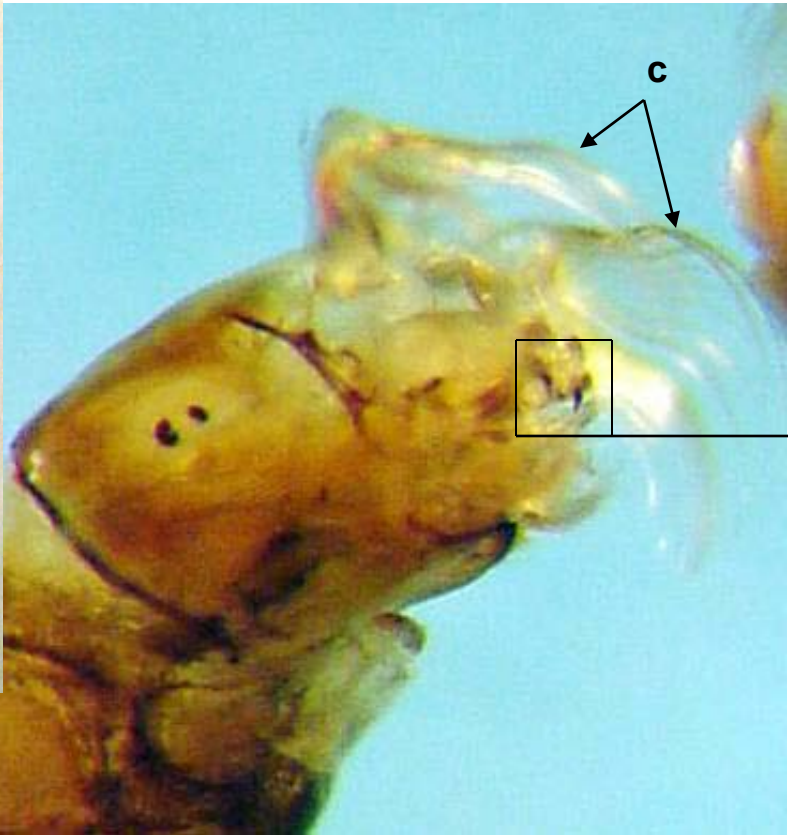


S. vittatum larva, head. Legend: c, cephalic fan; md, mandible.



ventral view

lateral view



50 μm

S. vittatum, salivary gland of larva (arrow in A, sg in B). Note: this gland produces “silk.”

